

# MesaWedge™

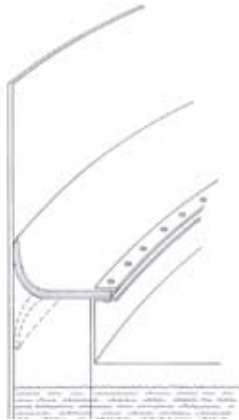
## Superchem 1400

**Mesa**

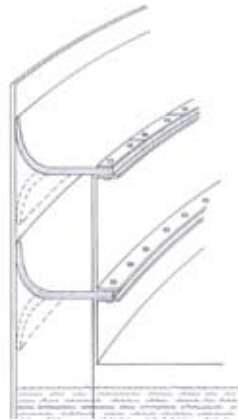
ISO 9001:2000 *certified*

MesaWedge seal systems are designed to prevent product loss and atmospheric contamination from Internal Floating Roof Tanks (IFRT). MesaWedge seal systems meet or exceed environmental regulations and are designed to ensure effective operation in specific tank conditions.

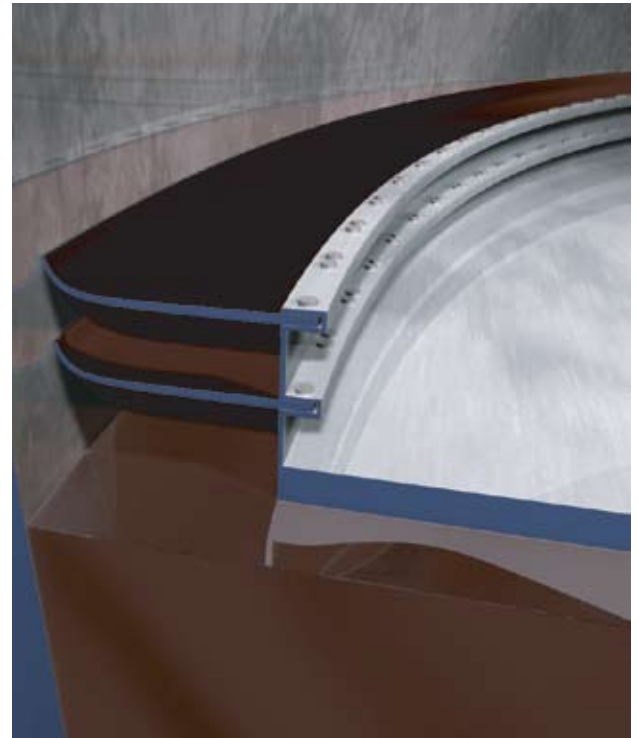
### MesaWedge Superchem 1400 Configurations



Single **MesaWedge** wiper primary seal system



Double **MesaWedge** wiper primary and secondary seal system



- Exceptional chemical resistance for alcohol, ethanol and other specialty applications
- Excellent flexibility and abrasion resistance
- Superior tensile and tear strengths



| Description            | Test Method | Physical Properties |
|------------------------|-------------|---------------------|
| Color                  | Mesa        | Black               |
| Material               | Mesa        | Nitrile/PVC         |
| Temperature Range      | Mesa        | -40 to 220° F       |
| Tensile (PSI)          | ASTM D-412  | 1600                |
| Elongation %           | ASTM D-412  | 300                 |
| Durometer (Shore A)    | ASTM D-2240 | 70                  |
| Tear, Die C, PPI       | ASTM D-624  | 140                 |
| Comp. Set, %, Method B | ASTM D-395  | 15                  |
|                        |             | 22 hours @ 212°F    |
| Width                  | Mesa        | 12 in.              |
| Length                 | Mesa        | 20 ft.              |
| Weight                 | Mesa        | 3.2 lb. / ft.       |

#### Northeast

4141 Airport Road  
Cincinnati, OH 45226-1643  
Phone: 513.321.4511  
Fax: 513.321.8178

#### Southeast

9202 Meadow Vista Blvd.  
Houston, TX 77064-2012  
Phone: 281.469.8098  
Fax: 281.469.9524

#### West

1726 South Magnolia Ave.  
Monrovia, CA 91016-4595  
Phone: 626.359.9361  
Fax: 626.359.7985

MR-SC1400-09